

Agtron[®] TIMED ONLINE

Equipment located at the Steffes Group Facility,
2245 East Bluegrass Road, Mt. Pleasant, IA

Mt. Pleasant

Inspection Day: Tuesday, December 15th from 9AM-4PM

OPENS: MONDAY, DECEMBER 14TH / CLOSURES: WEDNESDAY, DECEMBER 16, 2020 AT 10AM

AUCTIONEER'S NOTE: Don't miss your opportunity to bid on this Timed Online Multi-Ring equipment auction. Contact auctioneers for owner information, new consignments or changes at 319.385.2000. **LOADOUT:** Thursday, December 17th and Friday, December 18th from 9AM-4PM & Monday, December 21st from 9AM-4PM. ALL other load out times are by appointment only, please call office to schedule. 319.385.2000. Equipment must be removed by Wednesday, December 30, 2020, unless other arrangements are made.



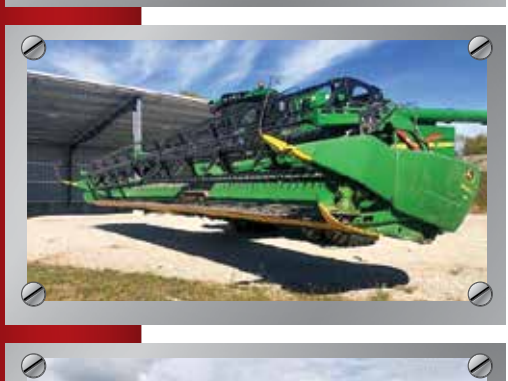
4WD TRACTOR
1981 Versatile 835, approx. 8,500 hrs., 4WD, Cummins NT-855-C, 4 hyd., BB, 12 spd, 18.4-38 duals, S/N 35225



2WD TRACTORS
1972 John Deere 4320, 2WD, diesel, open station, 2 hyd., 540/1000 PTO, sells w/JD loader & 80" bucket, (6) wheel weights, 18.4-38 rears, 10.00-16 fronts
IH 70 Hydro, 2WD, diesel (Owner states major overhaul on motor, less than 50 hrs.)
1940 Ford 9N, gas, 3 pt., 540 PTO, WF, S/N 135685



COMBINES
2008 John Deere 9670 STS, PRWD, premium cab, Contour-Master, 2,300 sep. hrs./new reman. engine w/warranty, Y&M, single pt. hookups, variable speed feeder house, chopper, spreader, extended wear grain handling system, high capacity unload auger, 800/70R38 fronts, 28L-26 rears, S/N H09670S726847
2005 John Deere 9660, 1,660 sep./2,471 eng. hrs., PRWD, Contour-Master, chopper, spreader, Y&M, hopper ext., S/N H09660S712312 (Owner states new JD engine 400 hrs. ago)
1994 John Deere 9600, 4,981 sep./7,469 eng. hrs., PRWD, land level, hopper ext., updated walker bearings, 20' unload auger, 900-32 front singles, S/N H09600X657947 (Owner states oil pan leak)



DRAPER HEAD
2015 John Deere 640FD, flex draper head, 40', S/N 1H0640FDT0775510 (Owner states new belts, new sickle & guards, new cutter bar)



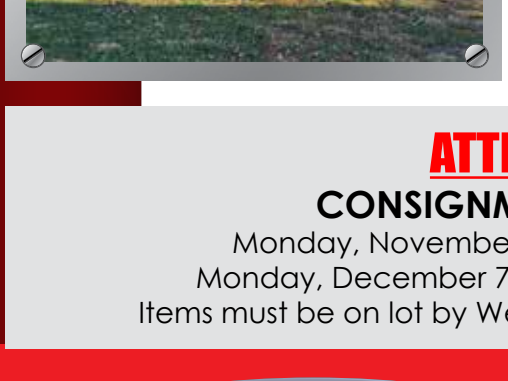
PLATFORMS
1989 John Deere 924, grain platform, 24', S/N H00924F631348
John Deere 216, grain platform, 16', bolt on sickle



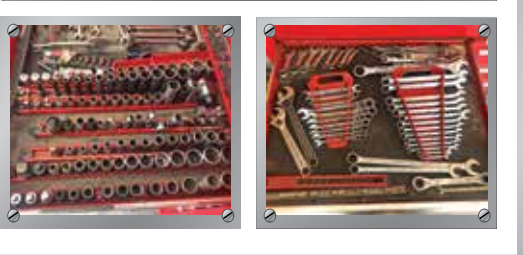
PLANTERS
2012 Case-IH 1240 Early Riser, planter, 16x30", drawbar, pull-type, hyd., vacuum, bulk fill, markers, (no monitor), S/N YCS028957
2007 Kinze 3700, planter, 24x30", flex fold, finger pick up, 3 bu. boxes, NT coulters, markers, S/N 750886



SEED TENDERS
Meridian 240 RT Seed Express, tandem axle, 240 bu., 2-5/16" ball hitch, hyd. drive spout, roll tarp, side ladder, Honda GX340 gas engine, elec. start, wireless controls, ST235/80R16 tires, S/N 6720101246715
Meridian 240 RT Seed Express, tandem axle, 240 bu., 2-5/16" ball hitch, manual discharge spout, roll tarp, side ladder, Honda GX160 gas engine, elec. start, wired controls, ST235/80R16 tires, S/N 6720100645556



Friesen Seed Titan, seed tender, tandem axle, 2-5/16" ball hitch, (2) box platform, manual folding poly auger, wired controls, Honda GX160 gas engine belt driven, ST205/75R14 tires, S/N 26097
Friesen Seed Titan, seed tender, tandem axle, 2-5/16" ball hitch, (2) box platform, manual folding poly auger, wired controls, Honda GX160 gas engine belt driven, ST205/75R14 tires, S/N 25900
Box Seed Tender, tandem axle, 2 box place, Honda gas engine, belt driven, wired controls, 2-5/16" ball, ST205/75D15 tires



NEW SKIDSTEER ATTACHMENTS
Patriot HD Brush Mower, 72"
Patriot HD Brush Mower, 80"
Patriot Rock & Brush Grapple, 84"
Patriot Rock & Brush Grapple, 80"
Patriot Rock & Brush Grapple, 75"
Patriot Rock & Brush Grapple, 66"
Patriot Root Grapple, 70"
Patriot Rock Bucket, 84"
Patriot Rock Bucket, 80"
Patriot Rock Bucket, 75"
Patriot Rock Bucket, 66"

(2) Patriot Pallet Fork Extensions, 84"
(2) Patriot Receiver Hitch
(4) Patriot Quick Attach Plate

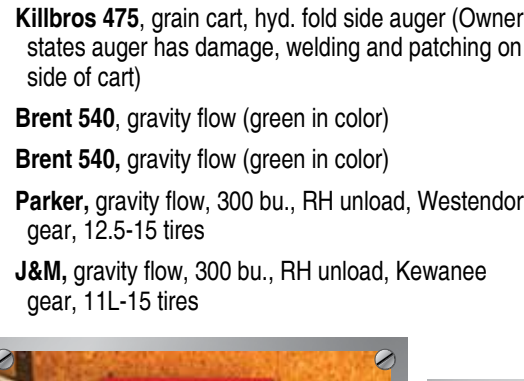
TILLAGE
Case-IH 340 True Tandem, disc, 27-1/2", 9" spacing, notched blades, S/N JFH0054015
2004 John Deere 726, mulch finisher, 24', 9" spacings, wing fold, walking tandems, 4-bar spring tine harrow, S/N N00726X007161
John Deere 2210, field cultivator, 31-1/2', pull-type, wing fold, 3-bar spring tine harrow, tandems, gauge wheels, knock off sweeps
John Deere 980, field cultivator, 25', tandems across, 5-bar harrow
DMI 730B, disc ripper, 7-shank, pull-type, wing fold, S/N JFH006155
DMI, crumbler, 24', pull-type, wing fold, 3-sections, (4) rolling baskets, 9.5L-15SL tires, S/N 322554

SPRAYERS & SPREADERS
2005 Hardi Nav1100, pull-type sprayer, 90' boom, 5-sections, triple nozzles, Mustang 3500 monitor, PTO pump, foam markers, chem. inductor
Spra-Coupe 220, 1,023 hrs., self-propelled sprayer, 50', 200 gal. poly tank, 4 speed manual transmission, 3-boom section, hyd., boom fold, 20" nozzle spacing, 11L-15 front tire, 7.5-16LT rear tires, S/N 208913205 (includes tow hitch, extra set of rear tires)
New Holland 165, manure spreader, single axle, poly floor, sloop gate, single beater, 540 PTO, S/N 848343
Manure Spreader, ground-driven, wood floor, double beaters, 7.50-20 tires
Poly Water Tank, comes w/hoses, chemical inductor & stand (no chemicals have been used in tank)

LIQUID APPLICATOR
2013 Case-IH 2800, liquid fertilizer, 15-knife, applicator, pull-type, 3-section shutoff, Ag Leader rate control (one owner)

GRAIN CARTS & WAGONS
J&M 875-18, grain cart, 1000 & Lg. 1000 PTO, 18" auger (1 owner)
J&M 750-18, grain cart, 1000 PTO, 18" auger, 24.5-32 tires (1 owner)
1991 Kinze 450C, grain cart, 450 bu., adj. wheelbase, tank sight glass windows, hyd. drive conveyor auger, 23.1-26 diamond tread tires, S/N 550008
Killbros 475, grain cart, hyd. fold side auger (Owner states auger has damage, welding and patching on side of cart)
Brent 540, gravity flow (green in color)
Brent 540, gravity flow (green in color)
Parker, gravity flow, 300 bu., RH unload, Westendorf gear, 12.5-15 tires
J&M, gravity flow, 300 bu., RH unload, Kewanee gear, 11L-15 tires

LIVESTOCK EQUIPMENT
Schuler 125FB, silage feeder wagon, 540 PTO, LH unload
New Holland 350, grinder mixer, single pt., 540 PTO
Calumet 2250, liquid manure tank, 540 PTO, liquid, tandem axle, S/N 11607
Poly Feeder Tank
Livestock loading chute



HAY EQUIPMENT
2004 John Deere 567, round baler, MegaWide pickup, twine & net wrap, 1000 PTO, 10,553 bales
New Holland 850, round baler, twine wrap, 540 PTO, 11L-15 tires, manual, controls in box, S/N 435578
IH 45, square baler
Hay Rack
Hayrack, 6'x10', 15" tires
Hayrack, 6'x12', hyd. hoist, 11L-15 tires

MOWERS
1987 Hesston 1007, disc mower, 9', 540 PTO, 3 pt., S/N 1015071
Bush Hog, rotary cutter, 7', 540 PTO, 3 pt.
2019 King Kutter 50D, finish mower, 60", 540 PTO, 3 pt., S/N 776744
Land Pride AFM 4016, finish mower, 16', 540 PTO, pull-type, wing fold, pneumatic tires

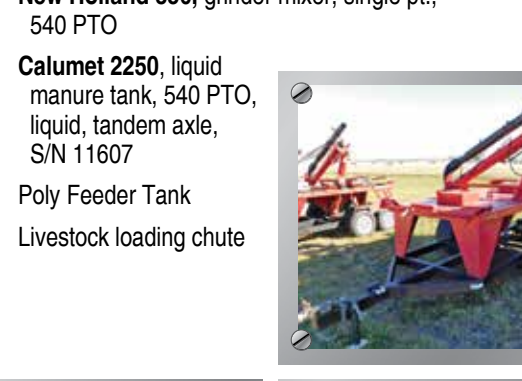
TRAILERS
2005 Wilson, livestock trailer, 7'x26', gooseneck, aluminum body, tandem axle, lights, brakes, rear swing door/rollup door, center divider, 7.50R16LT tires, VIN 1W1BGALC55H528681
1987 Kiefer, gooseneck livestock trailer, 28', alum./steel combo, tandem axle, 1 divide, 6.50-16.5 tires, VIN 1DVEA2229HK012692
Shop-Built, flatbed trailer, 6'x17 1/2', tandem axle bumper hitch, 225/75R15 tires (missing front tires)
Trailer, 7'x18', tandem axle

VEHICLES
2000 GMC Sierra SL K1500, miles unknown, 4WD, 4.8L, auto, regular cab, long bed, cloth, toolbox, 245/75R16 tires, VIN 1GTEK14V2YE329227
2002 Jeep Liberty Limited, 119,060 miles, 4WD, 3.7L, V6, power locks & windows, leather, VIN 1J8GL58K32W278764 (Seller states engine is blown)
2001 Chrysler Town & Country Limited, 229,567 miles, 3.8L, V6, automatic
2000 GMC Acadia, approx. 164,000 miles, AWD, leather interior, heated seats, 3rd row seating, power windows, locks, & mirrors, dual moon roof, dual climate control & rear climate control, heat, A/C (Seller states O2 sensor is bad)

UTV'S
2006 Polaris Ranger 500, 1,889 hrs., 4x4, Curtis cab, fully enclosed, heat, sells w/Curtis snowplow (Seller states new brakes, starter & CV joints)
John Deere Buck 500, miles unknown, 4x4, 5 speed, manual dump box, AT26x10-12 rears, AT25x8-12 fronts (missing ignition key & switch)

NEW FENCING
(40) 10' Interlocking Corral Panels
(80) 20' 6-Bar Continuous Fence Panels
(16) Free Standing Buffalo Panels
(10) Hog Panels

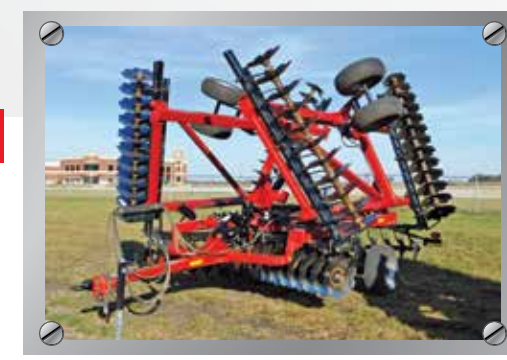
LIVESTOCK EQUIPMENT
Schuler 125FB, silage feeder wagon, 540 PTO, LH unload
New Holland 350, grinder mixer, single pt., 540 PTO
Calumet 2250, liquid manure tank, 540 PTO, liquid, tandem axle, S/N 11607
Poly Feeder Tank
Livestock loading chute



TECHNOLOGY
2014 John Deere StarFire 3000, 6,436 hrs., receiver, SF1 Accuracy, S/N PCGT3TA717014
2013 John Deere StarFire 3000, 5,915 hrs., receiver, SF1, S/N PCGT3TA6000088
2009 John Deere 2600, 1,429 hrs., display, GS2, AutoTrac SF2, Swath Control Pro, Basics, S/N PCGU26H190255

EQUIPMENT
2016 John Deere X730, 1,052 hrs., riding mower, 60" deck, gas, S/N 1M0X730AVGM042102 (purchased in Sept. 2016)
Woods GS72, land leveler, 6', 3 pt., scarifier
Blade, 81", 3 pt., side plates for box scraper style
Davis 150, backhoe
2-Wheel Car Dolly, pull-type, bumper hitch
Commando 800, log splitter, 8 hp. Kohler, key ignition, mounted on single axle trailer
(2) 200' of 5" Drain Tile (SOLD LUMP SUM)
Ford wheel weights
Dog Kennel, (8) panels (SOLD LUMP SUM)
(2) Alum. Trailer Toolboxes (SOLD LUMP SUM)
Barrel of Traps
A-Frame Hitch
Square Tube Axle (axle is separated w/wheels mounted), ST205/75R14 tires
Round Tube Axle (axle is separated w/wheels mounted), 9.5L-15 tires
Pallet of (2) Antique Water Pumps
Pallet of (3) Shop Lights w/Stands
Chain Saw
(4) LP White Heaters
Bench Top Drill Press
Full Line up of Tools, Snap-On, Mac, Blue Point, tools, sockets, wrenches, tractor jacks, ratchets, & specialty tools, toolboxes, & much more

TIRES
(4) Goodyear 620/70R46 Flotation Tires & Rims, rims will fit a JD 4920, 30, 40, or R4045, or R4060 sprayer, 80-85% tread
(2) Firestone 380/105R50 Row Crop Tires & Rims, rims include Unverferth 18" hub spacer & hardware for duals, will fit JD 4920, 30, 40, or R4045/60 sprayer
(4) Titan 46" 12-bolt rims
(4) Alliance Yield Master Tires 23.1x26, 12-bolt pattern
Michelin 480/80R46 duals
CFI 600 tires
(4) Contract AC65 Continental Tires 650/65R38, 12-bolt pattern
(4) BF Goodrich All Terrain 35x12.50-R15LT Tires
(4) P235/70R15 Tires on Chevy 5-Bolt Rims
(2) ST225/75R15 Tires on 6-Bolt Rims
(2) 235/70R15 Tires
(4) Cooper LT235/75R15 Tires
(7) 275/80R22.5 Tires
(6) 275/80R22.5 Tires



ATTENTION CONSIGNORS

CONSIGNMENTS WILL BE ACCEPTED ON:

Monday, November 30th - Friday, December 4th (8AM - 5PM)

Monday, December 7th - Wednesday, December 9th (8AM - 5PM)

Items must be on lot by Wednesday, December 9th (Week before auction)

Complete Lot Listings & Photos at

SteffesGroup.com

Steffes Group, Inc. | 2245 East Bluegrass Road, Mt. Pleasant, Iowa 52641 | 319.385.2000

TERMS: All items sold as is where is. Payment of cash, check or credit card must be made sale day before removal of items. Buyer's Premium is 10% capped at \$1,000 per item. Statements made auction day take precedence over all advertising. \$35 documentation fee applies to all titled vehicles. Titles will be mailed. IA Sales Tax laws apply. Canadian buyers need a bank letter of credit to facilitate border transfer.

